



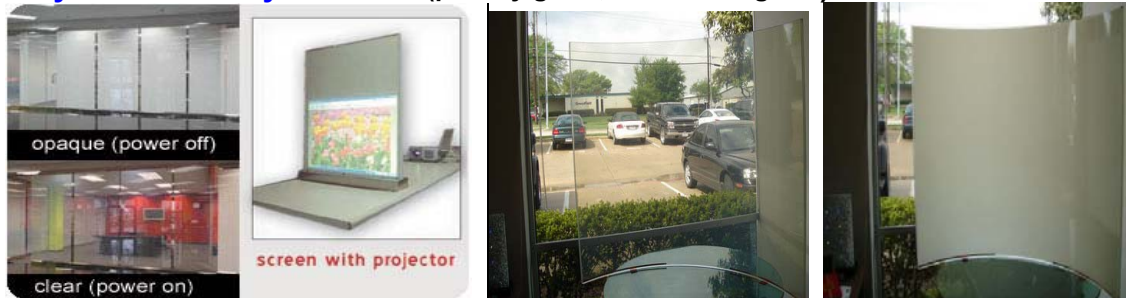
Polytron Technologies, Inc. is a leading electronic and optical vision glass supplier worldwide. Polytron supplies many creative and unique electronic and optical vision glass products to designers, high-end home/office decorating companies, and furniture manufacturers...etc. Our marketing network spans to over 50 countries. We are dedicated to supplying our designing/manufacturing clients brand-new and unique product materials that will exceed their expectations. Our product lines are quite versatile, thus compatible with all sorts of design concepts. Polytron is a specialty, architectural glass company, supplying high quality Polyvision Privacy Glass/Film (switchable glass), POLYMAGIC LED Glass (LED glass), Polyholog Glass (holographic glass/film), Polyflush Glass, Polynano Glass (nano glass), Polylow-E Glass (low E glass, Low E film), Polylens Glass (Polylens film) and LiteGlow Glass (Film / Paste).

Located in Taiwan, Polytron Technologies, Inc. is committed to offering the best products at competitive prices to all customers in the international community. Polytron Technologies, Inc. is a subsidiary of **Polytronix, Inc.**, an American company that provides the patent product Polyvision™ Privacy Glass to the Taiwan operation. This combination of companies is ready to meet customer needs for new choices of architectural and decorative materials for the world marketplace. Our skilled research and design teams utilize the highest quality raw materials to provide our customers with new application perspectives to compliment their particular skills and creations.

Polytron Technologies, Inc. (Taiwan) is focused on keeping our technology in the forefront and our quality at the highest level, designing new products and creating new forms of material in order to deliver the best products to our clients.

Polytron Technologies, Inc. has now created and launched several mainstream products to the market:

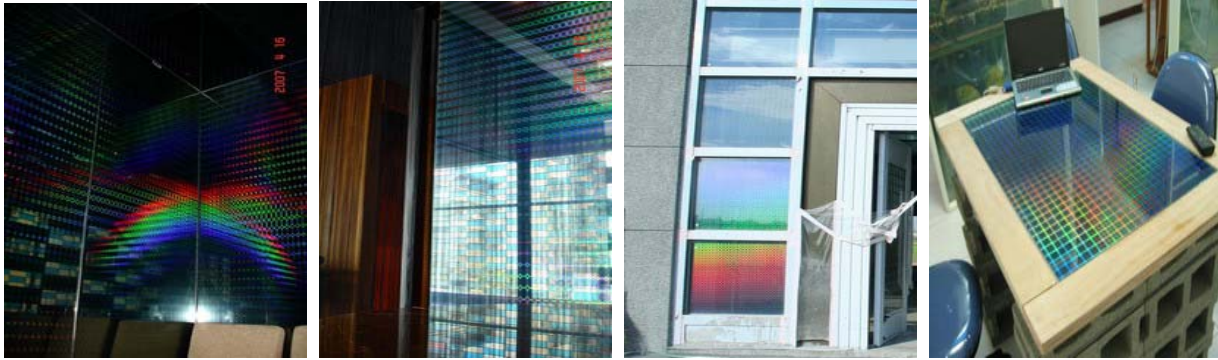
Polyvision Privacy™ Glass –(privacy glass, switchable glass)



Through Polyvision™ Privacy Glass, you will see things in a whole new light! At the flick of a switch, Polyvision™ products become transparent from a dormant, cloudy-white translucent state. Polyvision™ Glass, therefore, provides creative design applications for architects and other innovative and practical users.

Opportunities for use in bath rooms/shower enclosures, private clinical areas, conference rooms, hospitals (nurseries, emergency rooms, ICUs, operation rooms), exterior windows, optical shutters, projection displays, residential areas, security windows, skylights, cosmetic counter displays...etc. When the power is off, the liquid crystal molecules are randomly oriented so that incident light is scattered, and the Polyvision™ film is opaque. When electricity is applied, the liquid crystal molecules line up, the incident light passes through, and the Polyvision™ film is clear. Polyvision™ products are available in custom sizes and shapes to match your creative designs.

Polyholo Glass – (Laser Glass)



This is a new-patented technology that creates unique glass panels embedded with holographic patterns. It provides a variety of colorful, attractive, eye-catching patterns (stock patterns or custom patterns available).

Applications: outer windows, conference rooms, kitchens, shop windows, reception areas, newborn nurseries, room dividers, display areas, museums, and commercial shops.

Polyflush Glass---(Flush Glass)



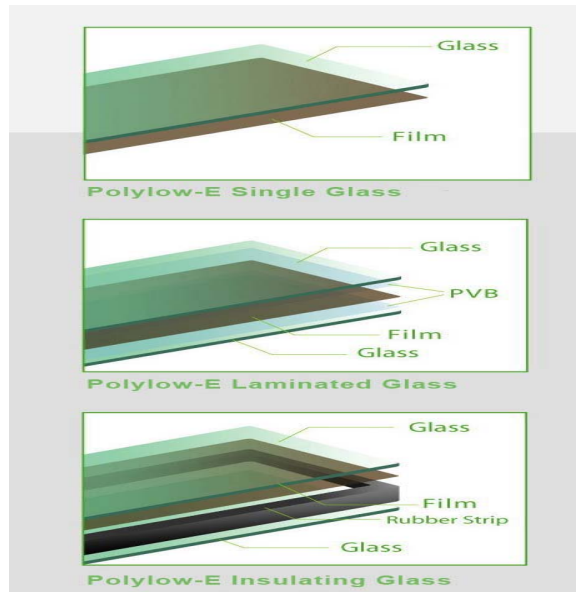
Polyflush Glass appears in different colors when viewing at various angles. It has no metal contaminants, no oxidation problem and provides up to 99% UV protection. This is an attractive, eye-catching material with a unique presentation that will enhance your most imaginative product displays.

Polynano Glass---(Nano Moving Display Glass)



Polynano Carbon Nanotube Field Emission Device (CNT-FED) features a perfect flat outer screen surface, flat rear screen, very thin thickness, high beam current output of carbon nanotube emission cathode, circular phosphor dot screen anode, monochrome output, see-through type, wide-environmental operation application monochrome display, and image interface application.

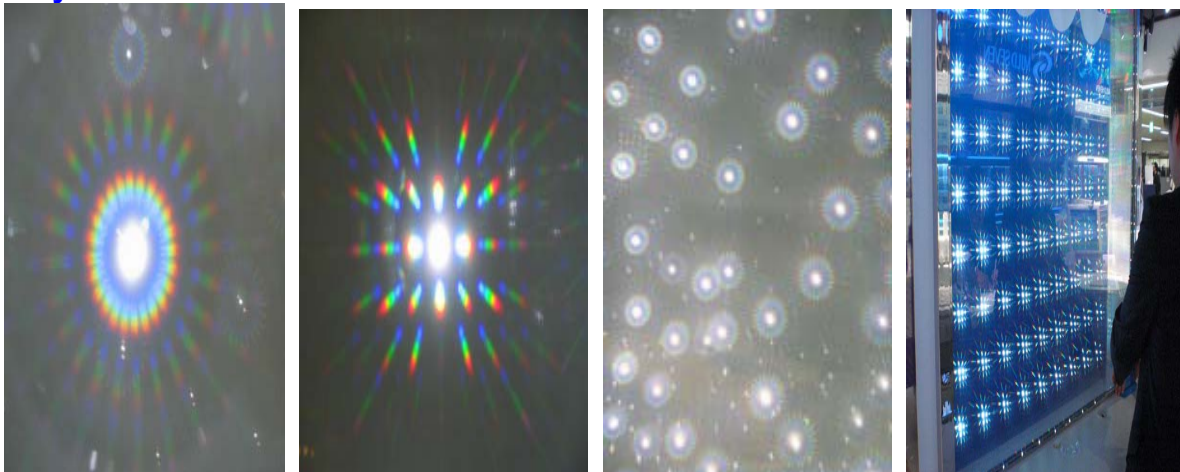
Polylow-E Glass--- (Low-E Glass)



It's a unique product that combines Low-E film with glass. It has become a new trend for curtain walls. Its advanced technology provides you with energy-saving benefits as well as protection from flying debris caused by explosions. It also blocks damaging UV light and uncomfortable solar heat. Better results could be obtained by laminating or insulating it with multiple layers of glass.

Advantages: •Energy Saving •Blocks up to 99% of UV light •Maximize comfort by blocking unwanted solar heat •High durability and stability •Blocks electromagnetic waves from electronic products •Brings an aesthetic look to buildings with its natural color.

PolyLens Glass—



This newly-released product in 2008 uses optical films to explore new materials to incorporate into unique innovative designs. Through the PolyLens Glass, you will see the lights become stars or sparkles. This product will make your light decoration seem like a dream from a fairy tale.

LiteGlow Glass—



LiteGlow has unique glow in the dark features, allowing it to set the perfect romantic atmosphere or serve as a light source in the event of a power outage. It's a novel application of using luminous technology in glass, and this innovative product will lead manufacturing techniques into the new era.

Some of the products listed are mainly suited for applications in interior design, decoration, window shell, product display, furniture...etc. For exact specifications, please visit www.polytron.com.tw to download binders.

For more information, please contact:

Mr. Sam Yu

Email: sam@polytron.com.tw

Website: www.polytron.com.tw

North America (All products)/Europe(Polyvision Privacy Glass only):

Mr. Sam Shao

Email: sshao@polytronix.com

Phone: +1-972-238-7045 ext. 140